

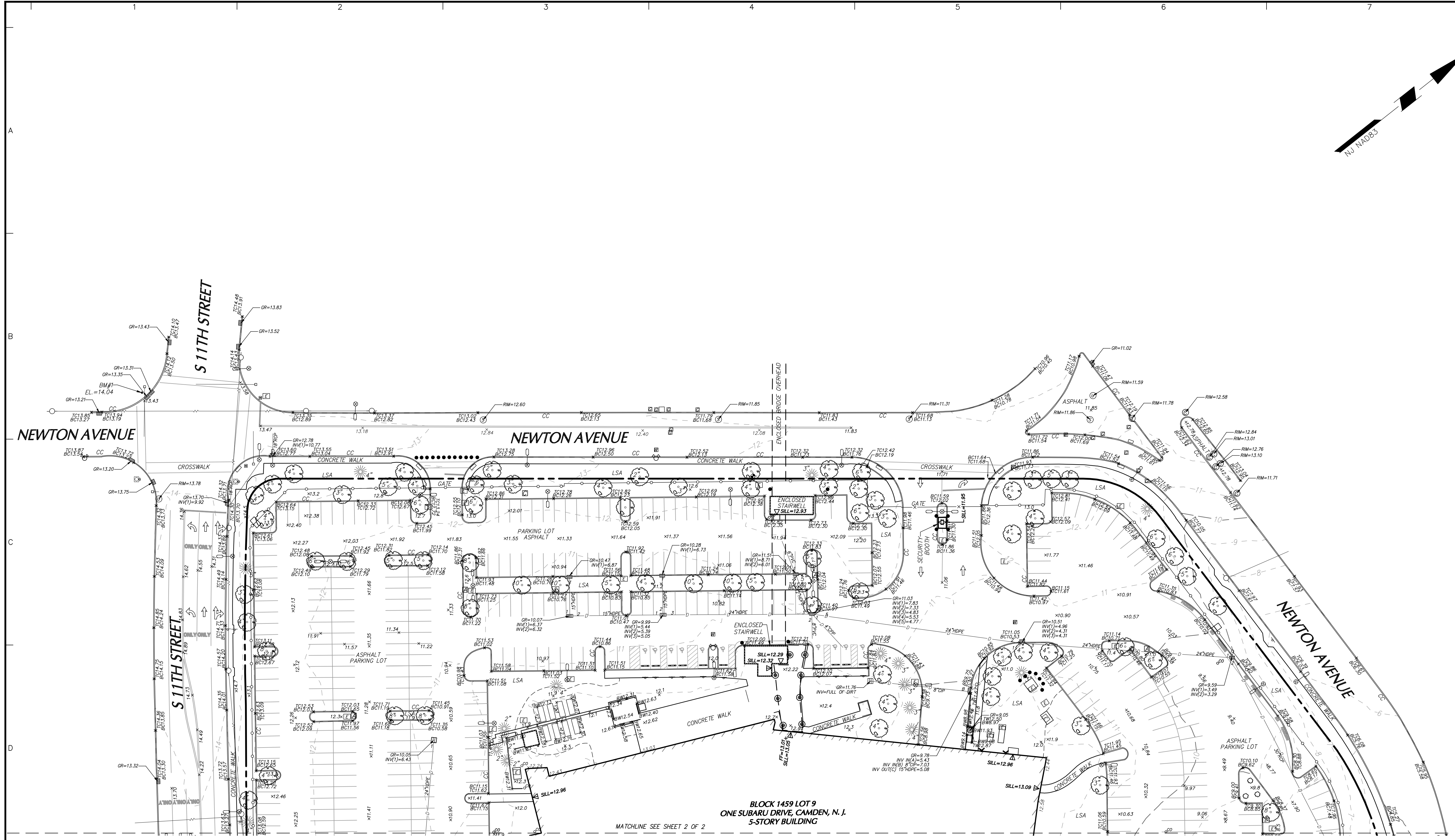
PROJECT LOCATION MAP

SCALE: 1" = 2,000'

SOURCE: MICROSOFT BING

NOTES

- 1. THE MERIDIAN OF THIS SURVEY IS REFERENCED TO THE NEW JERSEY STATE PLANE COORDINATE SYSTEM NAD83 (2011) OBTAINED USING GPS OBSERVATIONS.
2. ELEVATIONS SHOWN ARE BASED ON THE NORTH AMERICAN VERTICAL DATUM 1988 (NAVD88) OBTAINED USING GPS OBSERVATIONS.
3. TOPOGRAPHIC INFORMATION SHOWN IS BASED ON A FIELD SURVEY PERFORMED BY LANGAN ENGINEERING & ENVIRONMENTAL SERVICES DURING MAY, 2023.
4. OFFSETS (IF SHOWN) ARE FOR SURVEY REFERENCES ONLY AND ARE NOT TO BE USED FOR CONSTRUCTION OF ANY TYPE.
5. UNLESS SPECIFICALLY NOTED HEREON, STORM AND SANITARY SEWER INFORMATION (INCLUDING PIPE INVERT, PIPE MATERIAL, AND PIPE SIZE) WAS OBSERVED AND MEASURED AT FIELD LOCATED STRUCTURES (MANHOLES/CATCH BASINS, ETC.). CONDITIONS CAN VARY FROM THOSE ENCLOSED HEREON AT THE TIMES WHEN AND THE LOCATIONS WHERE DATA WAS OBTAINED, DESPITE MEETING THE REQUIRED STANDARD OF CARE THE SURVEYOR CANNOT AND DOES NOT WARRANT THAT PIPE MATERIAL AND/OR PIPE SIZE THROUGHOUT THE PIPE RUN ARE THE SAME AS THOSE OBSERVED AT EACH STRUCTURE, OR THAT THE PIPE RUN IS STRAIGHT BETWEEN THE LOCATED STRUCTURES.
6. ADDITIONAL UTILITY (WATER, GAS, ELECTRIC ETC.) DATA MAY BE SHOWN FROM FIELD LOCATED SURFACE MARKINGS (BY OTHERS), EXISTING STRUCTURES, AND/OR FROM EXISTING DRAWINGS.
7. UNLESS SPECIFICALLY NOTED HEREON THE SURVEYOR HAS NOT EXCAVATED TO PHYSICALLY LOCATE THE UNDERGROUND UTILITIES. THE SURVEYOR MAKES NO GUARANTEES THAT THE SHOWN UNDERGROUND UTILITIES ARE EITHER IN SERVICE, ABANDONED OR SUITABLE FOR USE, NOR ARE IN THE EXACT LOCATION OR CONFIGURATION INDICATED HEREON.
8. PRIOR TO ANY DESIGN OR CONSTRUCTION THE PROPER UTILITY AGENCIES MUST BE CONTACTED FOR VERIFICATION OF UTILITY TYPE AND FOR FIELD LOCATIONS.
9. THIS PLAN IS NOT VALID UNLESS EMBOSSED OR DIGITALLY STAMPED WITH THE SEAL OF THE PROFESSIONAL.
10. THIS PLAN IS NOT TO BE CONSIDERED AS A BOUNDARY SURVEY. BOUNDARY LINES AS SHOWN ARE REFERENCED FROM A PLAN TITLED "STREET VACATION AND EASEMENT PLAN", PREPARED BY T AND M ASSOCIATES, DATED 7/8/15 AND LAST REVISED 09-29-15.



BLOCK 1459 LOT 9 ONE SUBARU DRIVE, CAMDEN, N.J. 5-STORY BUILDING

MATCHLINE SEE SHEET 2 OF 2

LEGEND (NOT SHOWN TO SCALE)

Legend table with symbols and descriptions for various features: AIR CONDITIONING UNIT, BOLLARD, COLUMN, DOOR, DOUBLE DOOR, FLAG POLE, MONITORING WELL, SIGN, SHRUB, TREE, GROUND LIGHT, CATCH BASIN, CLEANOUT, ELECTRIC BOX, ELECTRIC METER, FIRE HYDRANT, COMMUNICATION BOX, GAS METER, GAS VALVE, LIGHT POLE, MANHOLE (TYPE AS LABELED), POWER POLE, ROOF DRAIN, STANDPIPE, TRAFFIC SIGNAL BOX, PEDESTRIAN PUSH BUTTON, TRAFFIC SIGNAL, TRAFFIC SIGNAL ARM, TRAFFIC SIGNAL POLE, UNDERGROUND VAULT, VALVE UNKNOWN, WATER METER, WATER VALVE, SPOT ELEVATION, CONCRETE, CONCRETE PAD, LANDSCAPED AREA, BUILDING OVERHANG, BOTTOM OF WALL, EDGE OF PAVEMENT, EDGE OF GRAVEL, EDGE OF WALK, DETECTABLE WARNING, CONCRETE CURB, CHAINLINK FENCE, IRON FENCE, OVERHEAD WIRE, CONTOUR LINE, DRAINAGE MARK OUT LINE, ELECTRIC MARK OUT LINE, COMMUNICATION MARK OUT LINE, GAS MARK OUT LINE, SANITARY SEWER MARK OUT LINE, WATER MARK OUT LINE, UNKNOWN MARK OUT LINE, REFERENCE UTILITY LINE (TYPE AS NOTED) - PLOTTED FROM EXISTING MAPPING.

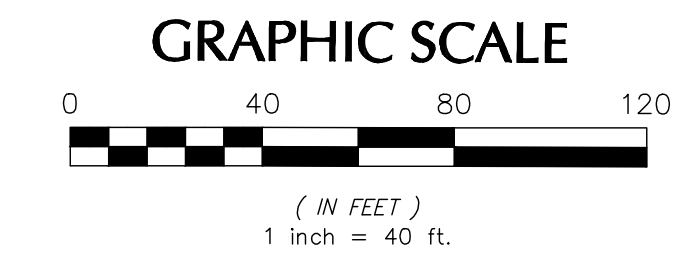


Table with columns: Date, Description, No. Header for REVISIONS.

I HEREBY STATE THAT THIS PLAN IS BASED ON A FIELD SURVEY MADE BY ME OR UNDER MY IMMEDIATE SUPERVISION IN ACCORDANCE WITH N.J.A.C. 13-40-5.1 "PREPARATION OF LAND SURVEYS", AND TO THE BEST OF MY PROFESSIONAL KNOWLEDGE, INFORMATION AND BELIEF, AND IN MY PROFESSIONAL OPINION CORRECTLY REPRESENTS THE CONDITIONS FOUND ON THE DATE OF THE FIELD SURVEY AT THE SUBJECT PROPERTY.

SIGNATURE JOSEPH E. ROMANO DATE SIGNED PROFESSIONAL LAND SURVEYOR NEW JERSEY LIC. No. 24GSO3627300

LANGAN Langan Engineering and Environmental Services, Inc. 1818 Market Street, Suite 3300 Philadelphia, PA 19103

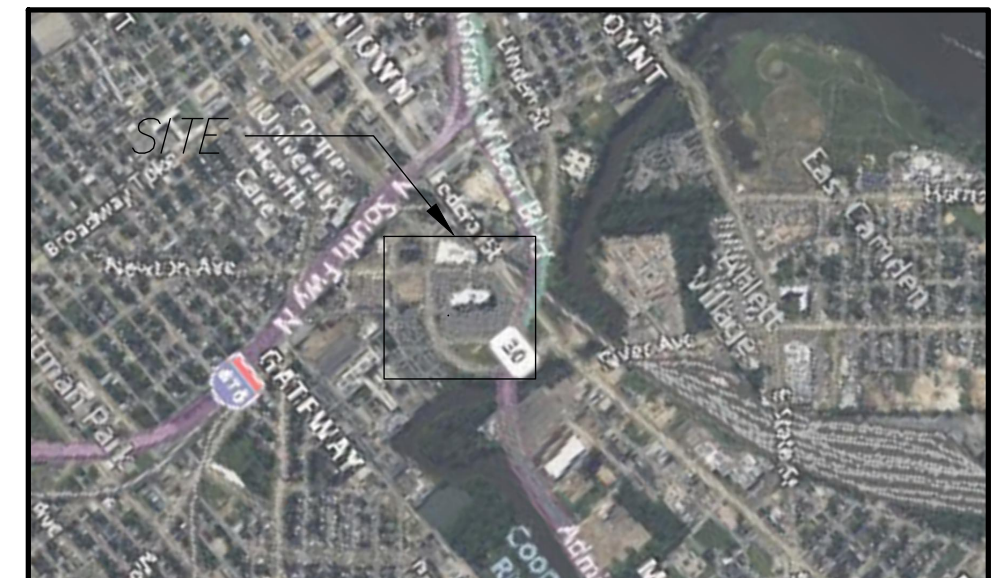
T: 215.845.8900 F: 215.845.8901 www.langan.com NJ CERTIFICATE OF AUTHORIZATION # 24GA2796400

Project SUBARU OF AMERICA, INC. BLOCK 1459, LOT 9 ONE SUBARU DRIVE CITY OF CAMDEN

CAMDEN COUNTY NEW JERSEY Drawing Title

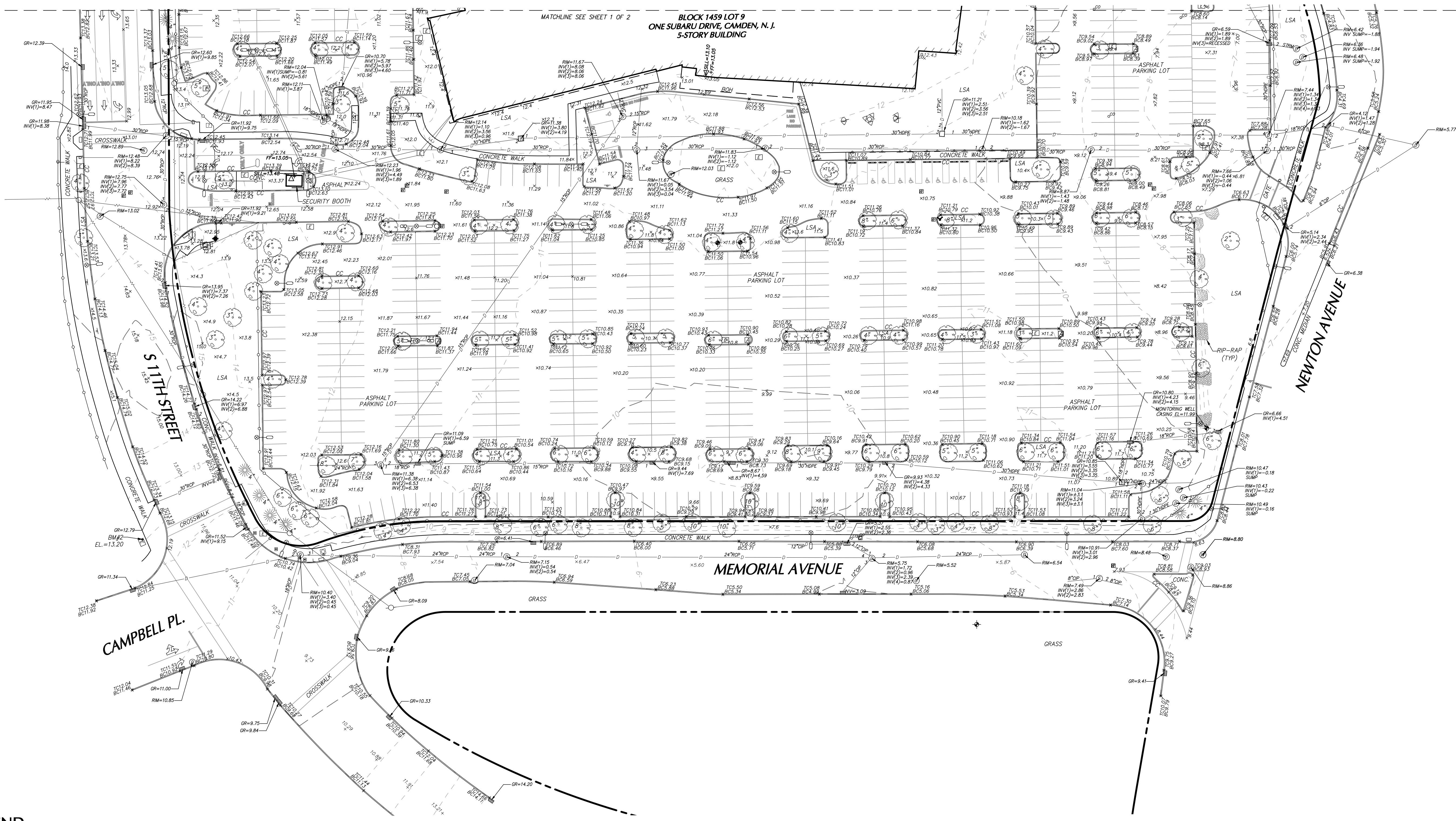
TOPOGRAPHIC & UTILITY PLAN

Table with Project No. 220140301, Date 08-18-2023, Drawing No. VT-100, and Sheet 1 of 2.



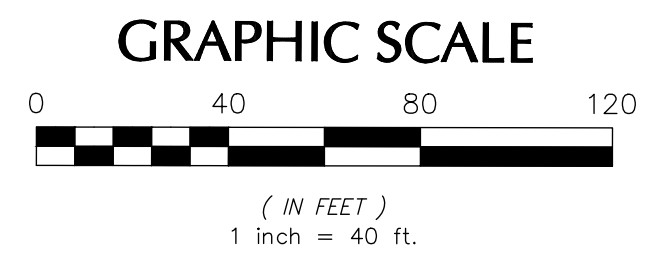
PROJECT LOCATION MAP
SCALE: 1" = 2,000'

SOURCE: MICROSOFT BING



LEGEND (NOT SHOWN TO SCALE)

	AIR CONDITIONING UNIT		ELECTRIC METER		TRAFFIC SIGNAL ARM		EDGE OF WALK
	BOLLARD		FIRE HYDRANT		TRAFFIC SIGNAL POLE		DETECTABLE WARNING
	COLUMN		COMMUNICATION BOX		UNDERGROUND VAULT		CONCRETE CURB
	DOOR		GAS METER		VALVE UNKNOWN		CHAINLINK FENCE
	DOUBLE DOOR		GAS VALVE		WATER METER		IRON FENCE
	FLAG POLE		GUY WIRE		WATER VALVE		OVERHEAD WIRE
	MONITORING WELL		LIGHT POLE		SPOT ELEVATION		CONTOUR LINE
	SIGN		MANHOLE (TYPE AS LABELED)		CONCRETE		DRAINAGE MARK OUT LINE
	SHRUB		POWER POLE		CONCRETE PAD		ELECTRIC MARK OUT LINE
	TREE		ROOF DRAIN		LANDSCAPED AREA		COMMUNICATION MARK OUT LINE
	GROUND LIGHT		STANDPIPE		BUILDING OVERHANG		GAS MARK OUT LINE
	CATCH BASIN		TRAFFIC SIGNAL BOX		BOTTOM OF WALL		SANITARY SEWER MARK OUT LINE
	CLEANOUT		PEDESTRIAN PUSH BUTTON		EDGE OF PAVEMENT		WATER MARK OUT LINE
	ELECTRIC BOX		TRAFFIC SIGNAL		EDGE OF GRAVEL		UNKNOWN MARK OUT LINE
					REFERENCE UTILITY LINE (TYPE AS NOTED) - PLOTTED FROM EXISTING MAPPING		



LANGAN
Langan Engineering and Environmental Services, Inc.
1818 Market Street, Suite 3300
Philadelphia, PA 19103
T: 215.845.8900 F: 215.845.8901 www.langan.com
NJ CERTIFICATE OF AUTHORIZATION # 24G27996400

Project
SUBARU OF AMERICA, INC.
BLOCK 1459, LOT 9
ONE SUBARU DRIVE
CITY OF CAMDEN

CAMDEN COUNTY NEW JERSEY
Drawing Title

TOPOGRAPHIC & UTILITY PLAN

Project No. 220140301	Drawing No. VT-101
Date 08-18-2023	
Drawn By HS/LC	
Checked By SFH	Sheet 2 of 2